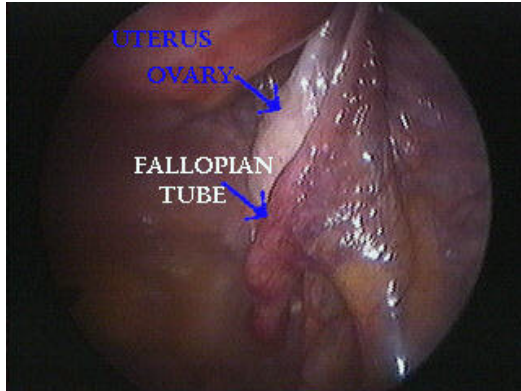


THE ROLE OF LAPAROSCOPY IN THE DIAGNOSIS OF GYNECOLOGIC PATHOLOGIES

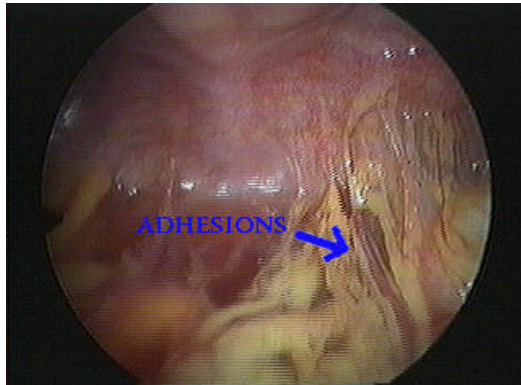
A Babaknia

Women's Health Institute of California, 1 San Sebastian, New Port Beach, CA 92660

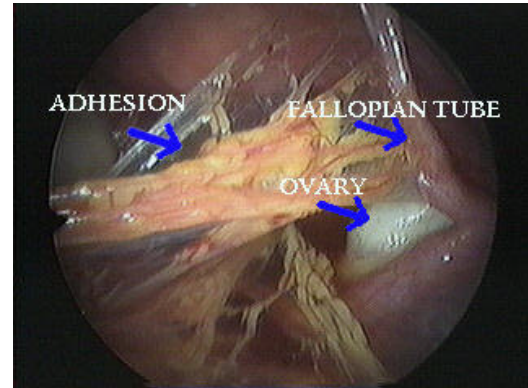
Received 08/12/95; Accepted 08/25/95



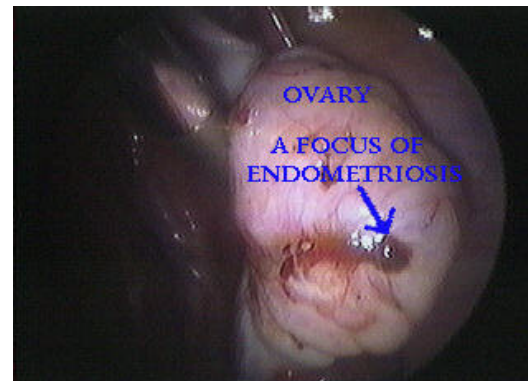
Video legend: Laparoscopic appearance of normal human ovary, tube and uterus (Quicktime movie:960 Kb)



Video legend: Laparoscopic appearance of adhesions in posterior uterine cul de sac due to previous pelvic inflammatory disease (PID). In the first screen, ovary (white in appearance) is located in the middle, fallopian tube (reddish-tan) is to the left and the metallic tip of the manipulating probe is to the right. In the subsequent frames, the adhesions in the posterior cul de sac. (Quicktime movie:578 Kb)

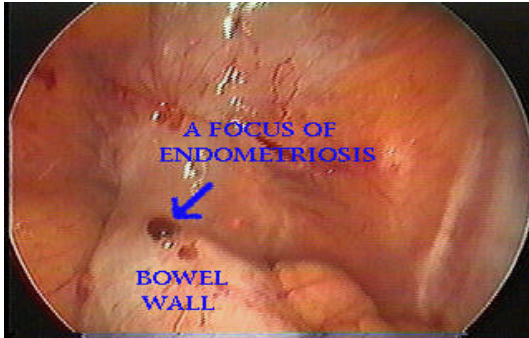


Video legend: Laparoscopic appearance of the fallopian tube adhesion. In the first screen, the tip of the manipulating probe is to the right and the fallopian tube, slightly out of the focus is in the middle. In the subsequent frames, the fallopian tube adhesion becomes apparent as it is pulled away with the manipulating probe. The uterus appears at the top of the screen. The video segment is ended with the stretched appearance of the fallopian tube adhesion. (Quicktime movie:560 Kb)

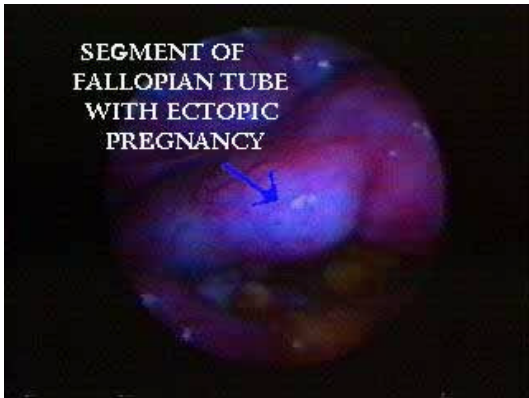


Video legend: Laparoscopic view of ovarian endometriosis. In this video segment, initially, the normal surface of the ovary is visualized. The ovary is moved by the manipulating probe to view the posterior aspect of the ovary to reveal the reddish-brownish foci of endometriosis on the ovarian surface. (Quicktime movie:1.01 Mb)

Laparoscopy in gynecologic diagnosis



Video legend: Laparoscopic view of intestinal endometriosis. In this video segment, the reddish-brown endometriotic foci are seen on the serosal surface of the large bowel. Towards the end of the large bowel. Towards the end of the video segment, one central focus of endometriosis is vaporized by the CO₂ laser beam. (Quicktime movie:1.06 Mb)



Video legend: Laparoscopic view of ectopic pregnancy. In the first screen, the uterus is seen to the left and the fallopian tube with ectopic pregnancy is seen in the middle. The manipulating probe moves the segment of the fallopian tube with ectopic pregnancy to reveal the normal segment of the fallopian tube. (Quicktime movie:940 Kb)

Note: For instruction on viewing videos, please see the on-line documentation